

Time Signatures Part 1

The time signature is one of the first things you see at the beginning of a piece of music. It looks like a fraction.

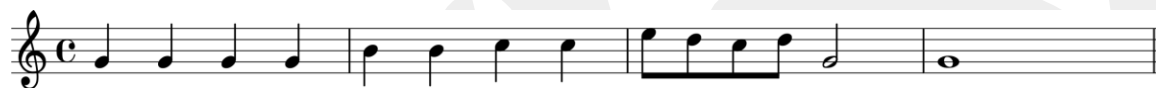
The top number in the time signature indicates the number of beats in the bar.

The bottom number indicates what kind of note gets 1 beat:



In this case there are 4 beats for measure, and the quarter note gets 1 beat.

4/4 time is also known as common time, and is shown like this:



3/4 is a waltz:



2/4 is common in marches:



5/4 is seen most commonly seen in jazz:

